

Availability

- Proximity card access: Restrict equipment access to authorized people through proximity card interaction
- User access scheduling: Restrict equipment access to specific times for each configured user
- Alarm beacon: Visual indication of access violation or environmental issue
- Alert Notification: Identify problematic trends before they escalate or export the data log for analysis.
- Event logging: Pinpoint the timing and sequence of events leading up to an incident by using the integrated audit trail.

Manageability

- Centralized management: Allows group administrative capabilities via InfraStruXure® Central.
- Building access integration: Use existing HID-based proximity card and authenticate from a RADIUS server.
- Master key override: Override electronic access with a hard key for power outages and maintenance
- Forced entry alarm: Alarm administrators based on a forced entry into a rack
- One-time access schedule: Configure the rack to be unlocked for a scheduled time period for maintenance
- Browser accessible: View the user interface with a browser. Gives quick access from anywhere on the network without the need to install software.
- Rack mounting: Includes horizontal, vertical, and toolless mount.

Protection

- Dual authentication and audit trail: Integrate with NetBotz surveillance for visual and proximity card identification.
- Administrative access: Full access and read-only levels available.
- Read-only access: Share access without risking unauthorized configuration changes.
- Password security: User-selectable password protection for Web interface.
- Alert notification: Configure alert destination for access and device alarms.

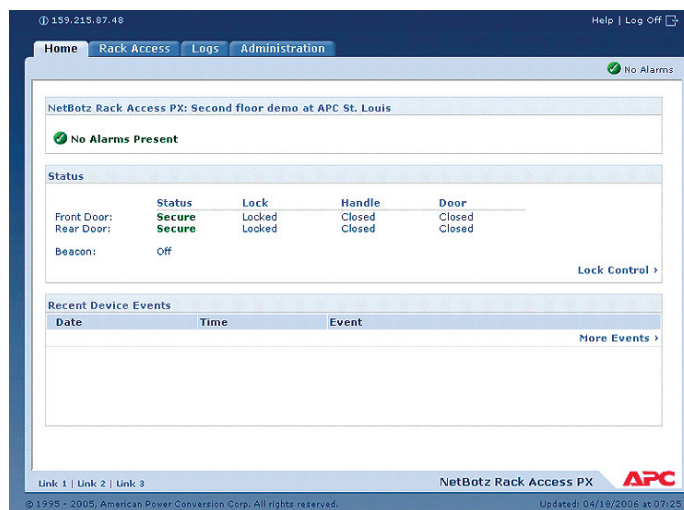
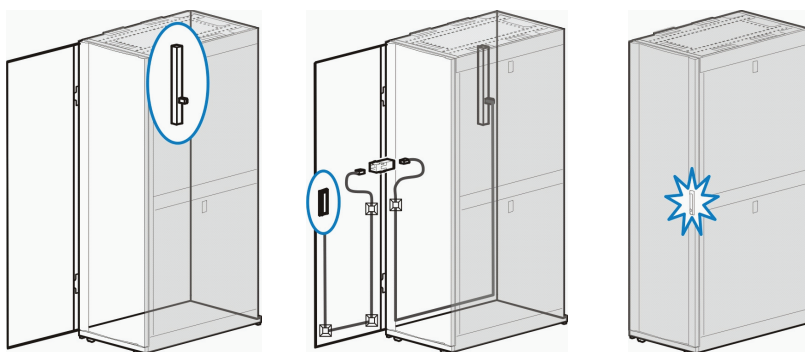


NetBotz® Access Control

Rack Access PX-HID.

Rack Access PX-HID protects NetShelter SX enclosures from unauthorized access. This IP-based system uses electronic locks to secure enclosures and access is granted through HID-based proximity cards or the secure Web interface. Users can integrate with existing building security, as it is compatible with HID-based proximity cards using 125kHz technology and can authenticate from a RADIUS server. Alarm notification options, such as email, indicate a compromised security state. Administrators can easily configure access for individual employees, schedule access to equipment for maintenance purposes, and view audit trails. Easy mounting options include traditional rack mounting or toolless zero-U mounting.

Network appliances enabling remote and local authentication for your NetShelter® SX enclosures.



NetBotz Rack Access PX-HID is ideal for:

- racks that contain sensitive equipment and information
- racks in remote or unmanned locations
- recording detailed access logs such as who accesses what and when
- monitoring the lock and door status of racks to ensure that all racks are secured

Protecting IT Assets from Physical Threats

APC
Legendary Reliability®

Technical Specifications

Components	Rack Access Appliance, 2 Proximity Card Reader Handles, 2 RJ45 Style Door switch kits, cables, hardware, 2 HID cards
Accessibility	Remote Access, Proximity Card, Master Key Override, User Access Scheduling
Rack Mounting	0U or 1U
Enclosure Compatibility	NetShelter® SX
Alert Notification	SNMP, Paging, E-mail, and Visual Beacon
Network Configuration	TCP/IP Configuration Parameters
Management Solutions	InfraStruXure® Central, HP Open View, What's Up Gold
Appliance Ports	1 RJ-45 Ethernet Port, Serial Port (configuration only), Front Door Lock Port (handle), Front Door Switch (switch), Peripheral Port (reserved for future use), Rear Door Lock Port (handle), Rear Door Switch (switch)
Power	Integrated 110/240 volt power supply (IEC connector)
Proximity Card Capacity	Up to 20 proximity card signatures per appliance
Proximity Card Compatibility	HID Proximity Cards (HID 125kHz proximity technology). Card formats: H10301, H10302, H10304, Corp1000.

The screenshot displays the NetBotz Rack Access PX web interface. At the top, there's a status bar with the IP address 159.215.87.48 and links for Help, Log, and Off. Below this is a navigation menu with tabs for Home, Rack Access, Logs, and Administration. The main content area is titled 'User Access' and includes a sidebar with links for Door Properties, Lock Control, Beacon, and Schedule. The main panel shows a 'Registered Users' table with columns for Name, Contact, Door Access, and Time Scheduled. Below this is an 'Unregistered Users' section with a table of 'Unknown Card' numbers and 'Last Attempted Access' times. The interface also features a 'No Alarms' status indicator and a footer with links and the APC logo.

Name	Contact	Door Access	Time Scheduled
John.Doe	11401	Front/Rear	Granted
John.Doe	11471	Front/Rear	Granted
John.Doe	11441	Front/Rear	Granted
John.Doe	11252	Front/Rear	Granted
John.Doe	11483	Front/Rear	Granted
John.Doe	2982	Front/Rear	Granted

Unknown Card	Last Attempted Access
ae825b0800000000	03/30/2006 at 10:54:31
0000000000000007	03/29/2006 at 15:54:50
2b1b610800000000	03/24/2006 at 13:21:59
8926610800000000	03/23/2006 at 12:48:23
8a26610800000000	03/23/2006 at 12:48:15
a628610800000000	03/23/2006 at 12:48:06

APC's quality system is certified by ISO 9001 standards

For more information call:
Tel: 800 800 4APC - US & Canada
Tel: 401 789 0204 - World wide



APC Corporate
APC North America
132 Fairgrounds Road
West Kingston, RI 02892 USA
Call: 800 800 4APC
Fax: 401 789 3710

APC Europe
APC Ireland
Ballybrit Business Park
Galway, Ireland
Call: +35 391 702000
Fax: +35 391 756909

APC Asia Pacific
APC Australia
Level 13, The Denison
65 Berry Street
North Sydney, NSW2060
Call: +61 2 8923 9373

APC Latin America
5301 Blue Lagoon Dr.
Suite #610
Miami FL 33126 USA
Call: 305 266 5005
Fax: 305 266 9695

Visit: www.apc.com
e-mail: apcinfo@apc.com
Web Support: support.apc.com
PowerFax: 800-347-FAXX

APC
Legendary Reliability®